



KATHOLISCHE UNIVERSITÄT
EICHSTÄTT-INGOLSTADT

Studying at the
Catholic University of
Eichstätt-Ingolstadt

20 questions and answers

*Sommerresidenz of the
Catholic University in Eichstätt*




Ingolstadt School of Management



Studying at the Catholic University of Eichstätt-Ingolstadt

– 20 questions and answers

1. What are the advantages of studying in Germany?	5
2. What reasons are there for studying at the KU?	6
3. How much German will international students have to know?	7
4. What school-leaving qualification do internationals need in order to study at the KU? . . .	9
5. How can prospective international students prepare for their studies at the KU?	11
6. How do prospective international students find their suitable degree program?	12
7. How can prospective international students apply for studies at the KU?	14
8. How much does studying at the KU cost?	16
9. Are there scholarship programs or other types of financial support?	18
10. Are international students allowed to work during their studies?	19
11. Which documents are required for entering Germany?	20
12. What kind of support do internationals receive at the KU?	22
13. Where do international students live?	24
14. What are the costs of living in Eichstätt and Ingolstadt?	25
15. How do you get around and is there a public transport network?	26
16. How safe is life in Eichstätt and Ingolstadt?	27
17. How does the medical care system in Germany work?	29
18. What do Germany and Bavaria have to offer as a travel destination?	30
19. What opportunities do internationals have after their studies?	35
20. Where can I get more information?	37



Because of the high educational level, it was challenging for me to come here. But it was a positive challenge – and it absolutely paid off!

Ivonne García,
Master Business and Economics,
Mexico

1. What are the advantages of studying in Germany?

German universities enjoy an excellent reputation worldwide. As per tradition, science and research are of great importance. In Germany, there are more than 400 state-approved universities all across the country. Therefore, students do not necessarily have to resort to big and expensive cities in order to find high-level study offers. The higher education offer in Germany is very comprehensive with over 19,000 different degree programs being offered throughout the country.

High educational level – low costs

A great advantage of studying in Germany is that state universities and institutions which receive government funding have very low tuition fees. Still, research and teaching is on an outstanding level. This is partly owing to the fact that a very high value is attributed to education in Germany which should be freely accessible for everyone. This is why the studies of all students in Germany, including international students, are funded by taxes.

With its location in the heart of Europe and many neighboring countries, Germany has been an immigration country for many decades. This fact has shaped the country and its society and has made it an open-minded, welcoming place also for international students, which takes pride in its cultural and regional diversity.



2. What reasons are there for studying at the KU?

The Catholic University of Eichstätt-Ingolstadt (KU) is the only Catholic university in the German-speaking world. The KU is a state-approved university, this means that the degrees and qualifications that it awards are equivalent to those issued by state universities in Germany. The KU also has the right to award doctoral degrees and habilitations. It is committed to its cosmopolitan character and therefore warmly welcomes students of all denominations, faiths as well as students of no religious belief.

Users of the German online portal **StudyCheck.de** rated the KU among the ten best universities in Germany – for Bavaria, the Catholic University of Eichstätt-Ingolstadt was even rated number one. This makes the KU one of the most popular universities for students in Germany.

Learning in a friendly atmosphere

This result confirms the ideal study conditions at the KU. Our 5000 students are able to work and learn in a friendly atmosphere. They benefit from personal supervision, an interdisciplinary study offer, excellent facilities and a global network of almost 300 partner universities. International students at the KU receive comprehensive support from the KU International Office.

Promoting social commitment

Studying at the KU is more than just acquiring specialist knowledge. Being a Catholic university, the KU offers its students the possibility to develop their personality and potential to the full – beyond teaching and research. The KU actively promotes civil involvement and social skills. There are a variety of political, Christian, social and creative groups for students to get involved in at the KU. A Christian view of human life, Christian values, open dialog and critical thinking form core pillars in this context. Students have the opportunity to carry out volunteer work as part of their studies, thus contributing to the development of their unique profiles. These activities are supplemented by various and especially intercultural offers of the Catholic Campus Ministry (KHG).

The KU is committed to the guiding principles of sustainability and education for sustainable development. Thanks to its sustainability management, the KU was the first German university to be awarded with the EMASplus certificate by the UNESCO Commission.



3. How much German will international students have to know?


Prospective foreign students must have German language proficiency in order to be able to start their studies at the KU straight away. Such language skills can be proven by different certificates. In order to be admitted to study in most of the degree programs at the KU, applicants will have to provide proof of German language proficiency at least on the level “DSH 2” of the German language examination for university entrance or “TestDaF 4-4-4-4”. Anyone who has not yet acquired this level of proficiency but has been admitted for studies has the option of enrolling for an eight-month German intensive course at the KU prior to the start of their studies. However, also

applicants for the German intensive course require a certain background knowledge of German because it is taught in German. Furthermore, experience has shown that most students are not able to reach the required language proficiency for their studies within one year without any prior knowledge of German.

For an application for admission with preparatory German course, language skills of at least A1/A2 level are sufficient. Proof of the respective language proficiency must be included in the application for admission.

More information on this topic is available under question 6.





*As the KU is a small university
in a small town, I find it easy to
concentrate on my studies and
still have enough time for
meeting my friends.*

José Chávez,
Bachelor Business and
Economics, Mexico

4. What school-leaving qualification do internationals need in order to study at the KU?

In addition to linguistic requirements, prospective international students must also fulfill the academic requirements in order to be able to study at the KU. Those who hold a *Deutsches Internationales Abitur* (DIA) can enroll or apply for a place of study immediately, just like Germans. An application must be submitted for example for degree programs with admission restrictions or for degree programs with special admission requirements. Such requirements may include an entrance examination or aptitude test or an internship which has to be completed prior to the start of the studies. More information is available on the websites of the individual degree programs or at the KU Student Advisory Service.

All other international prospective students, including those holding an International Baccalaureate (IB) in accordance with the conditions of the Standing Conference of the Ministers of Education and Cultural Affairs or those holding a *Gemischtsprachiges International Baccalaureate* (GIB) have to apply via the KU Student Office. The team at the Student Office will review whether the prospective students' educational path and German language proficiency allow them to start their studies straight away or whether admission to the relevant subject is generally possible but can only be effected subject to prior completion of the German intensive course or successful completion of the DSH examination *Deutsche Sprachprüfung für den Hochschulzugang* and/or whether it is recommended that the students visit the preparatory college (*Studienkolleg*) in Munich or Coburg first.

Prospective students who hold a school-leaving qualification without direct higher education entrance qualification have to visit a preparatory college before starting their studies. These students will have to complete

an assessment test (*Feststellungsprüfung*) in order to prove their qualification for taking up their studies. Attending a preparatory college can help them prepare for the assessment test. The preparatory college for the Bavarian universities is located in Munich. The college in Coburg is responsible for preparing prospective students for all universities of applied sciences (*Fachhochschulen*) and all *Fachhochschule* degree programs.

Please note that prospective students cannot apply to the preparatory colleges directly but are referred to the colleges by the Bavarian universities. Thus, the prospective students apply for a place of study at the KU and will be referred to the preparatory college by the KU Student Office following corresponding assessment of their application documents. After having passed the assessment test at the preparatory college, the prospective students can take up their studies at the KU. However, special admission requirements must be taken into account in the individual case (please see question 7). For all prospective students who want to attend a preparatory college, it is important to know that they will have to provide proof of German language proficiency of at least B2 level when submitting their application for a place of study, because the preparatory college is taught in German. As the college does not only impart linguistic knowledge, but also includes knowledge and skills in preparation for the prospective students' specific degree programs, the required level is higher than the minimum level for the German intensive course.

Visit the following website to check whether your national school-leaving qualification entitles you to access a German higher education institution directly or not:

<https://anabin.kmk.org/>



5. How can prospective international students prepare for their studies at the KU?

The KU offers several preparatory courses for applicants who do not yet have sufficient command of German and are thus not eligible for direct admission to higher education in Germany.

German intensive course (preparation for the DSH German language examination for university entrance)

The German intensive course that prepares learners for the DSH examination is an eight-month intensive course in which only prospective students who are admitted to study at the KU can participate. As a rule, the course starts in October and ends with a final examination in July of the following year. All course participants have to complete a required placement test to determine their prior knowledge of German to ensure that they are allocated to the most appropriate course level.

The course comprises 620 class hours in total: three hours in the morning (four hours during the semester break) and two two-hour conversation classes in the afternoon. If prospective students can provide proof of German language proficiency at B1 level, they have the possibility to join the intensive course at March 1 of the respective calendar year.

However, even if they only join the intensive course in March, they must still already have enrolled at the KU in the previous winter semester. Participants will have to pay a fee for the course; however, it is possible to receive a partial refund of 50% if participants complete at least three semesters of study at the KU following the intensive course.



Other preparatory courses

In addition, the KU also offers courses on academic writing, German regional and cultural studies, listening comprehension, speaking and pronunciation as well as many other intercultural training and workshops. Participation in these courses in preparation for the studies at the KU is free of charge provided that the participants are enrolled at the university and have been preliminarily admitted to studies. Naturally, the German intensive course can be combined with other preparatory offers.

6. How do prospective international students find their suitable degree program?

Finding the right degree program is a very important decision, also for the students' future, and can only be successfully effected in an individual decision-making process. The KU is a university that focuses on the humanities and social sciences, which is why it cannot offer the whole spectrum of programs especially in the field of natural sciences and engineering. When it comes to deciding which KU degree program is the ideal match for you, we offer comprehensive and professional individual support and advice by taking into account the respective student's personality and potential.

*Members of the KU Student Advisory Service team:
Marie-Anne Kohll (left) and Dr. Stephanie BöB*



The KU has six university faculties: the Faculty of Theology, the Faculty of Philosophy and Education, the Faculty of Mathematics and Geography, the Ingolstadt School of Management for business and economics programs, the Faculty of Languages and Literatures and the Faculty of History and Social Sciences. In addition, it also has two *Fachhochschule* faculties: the Faculty of Social Work and the Faculty of Religious Education.

Large choice of programs and subjects

This variety allows the KU to cover many different interests and talents. It offers a large choice of courses from business and economics over journalism and Latin American studies to psychology, European studies, tourism and political science. A distinguishing offer at the KU is the "Flexible Bachelor's degree program" that allows students to create their own program combination to suit their interests (they can choose up to four from a choice of 20 subjects!).

More information on our degree programs is available on our website www.ku.de/en or at the KU Student Advisory Service: studierendenberatung@ku.de. They are happy to help all prospective students, regardless of whether they are interested in a Bachelor's or Master's program. The team supports you in finding the right degree program and during the decision-making process, gives recommendations and tips regarding the admission procedure and provides information on enrollment at the KU. You can receive advice in a personal meeting, by e-mail, phone or video conference. If you require comprehensive support, it is recommended to arrange an individual appointment.



What I like best is that the KU offers so many possibilities and that I get a lot of new insights and perspectives on my subject – in particular in connection with sustainability.

Ana Tovar,
Master Tourism and Sustainable
Regional Planning,
Colombia

7. How can prospective international students apply for studies at the KU?

Prospective students who are foreign nationals but have obtained a German university entrance qualification (*Abitur*, *DIA*) can enroll in the context of the normal enrollment and application procedure at the KU, irrespective of whether the Abitur was obtained in Germany or at a German school abroad (*cf. question 4*).

All other prospective students will have to submit a special application form and the pertaining required documents in order to apply for a place of study. The form and comprehensive explanatory notes on how to complete it and which documents to include in the application is available at the following link:

<https://www.ku.de/en/international/international-students>

There are special deadlines for international applicants. As a general rule:

- June 15 for the following winter semester for all *Fachhochschule* degree programs at the KU (Faculty of Social Work and Faculty of Religious Education);
- July 15 for the following winter semester for all university degree programs at the KU.

There are a few degree programs at the KU that form an exception: programs with admission restrictions and programs for which special admission requirements apply (*cf. question 4*). For more detailed information on these programs, please contact the KU Student Advisory Service directly: studierendenberatung@ku.de

Please note that as a rule, first-year students cannot apply for starting their studies in the summer semester. There is only one exception: the Magister degree program in Catholic Theology. In this case, the application deadline for the summer semester is January 15.

The application for admission must be submitted with all required certificates and records (as a certified copy) and other supporting documents directly by mail to the KU Student Office.





8. How much does studying at the KU cost?

There are no tuition fees for studying at the KU. The only fees students will have to pay are the semester fees, currently amounting to €56.00. Thus, the costs for six semesters (standard length of a Bachelor's program) are only €336.

The semester fees help to finance special offers for students, such as meals at the canteen which are offered at reduced prices for students.

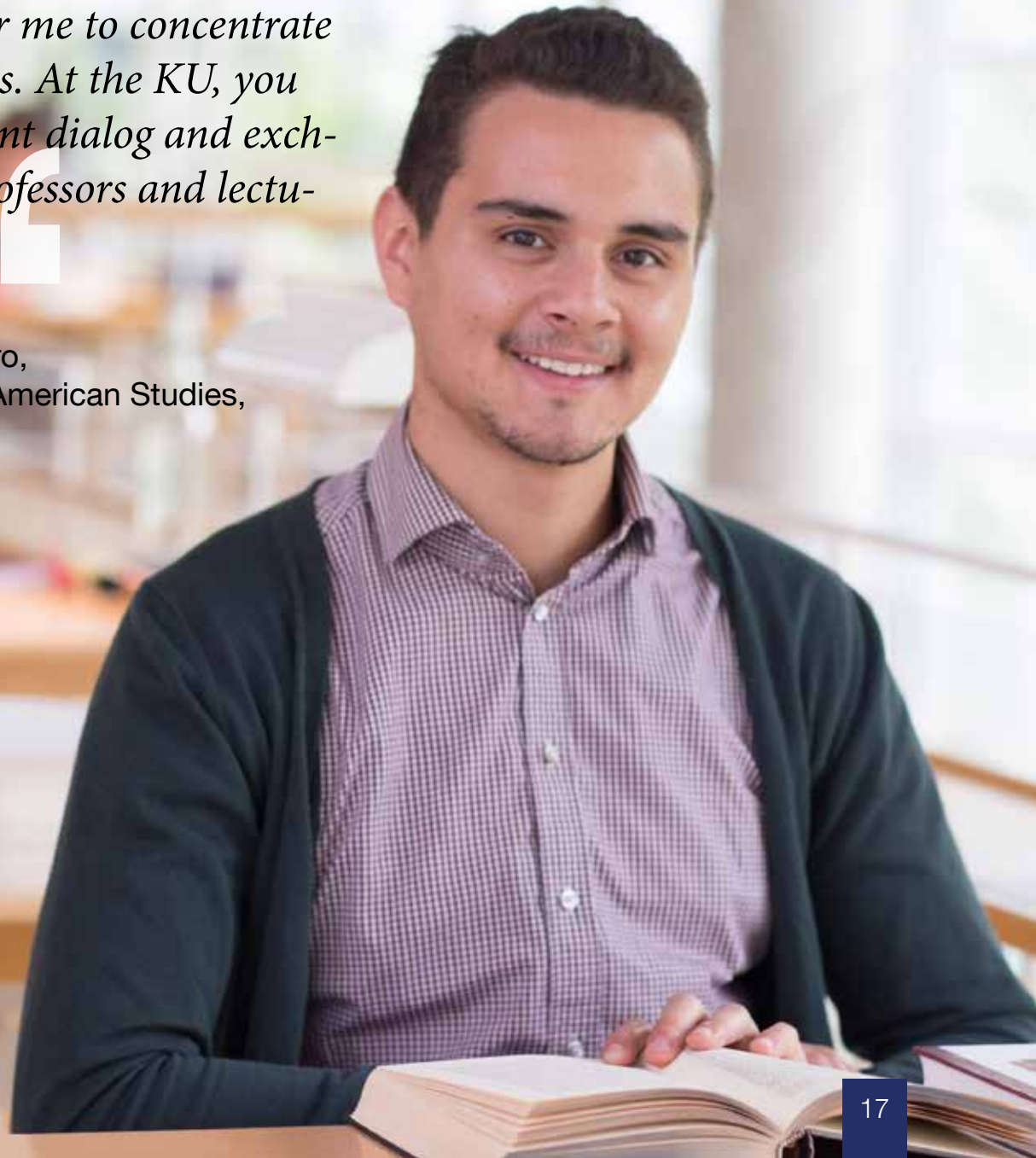
More information on the involved costs is provided under question 14.



At the canteen, KU students can buy meals at reduced prices.

I appreciate that courses are taught in small groups. Like this, it is easier for me to concentrate on my studies. At the KU, you are in constant dialog and exchange with professors and lecturers.

Mathias Guerrero,
Bachelor Latin American Studies,
Colombia



9. Are there scholarship programs or other types of financial support?

Studying at the KU is free of charge (except for the semester fees of €44.50). This is why financing questions mainly concern aspects such as costs of living, in particular costs for rent, food, public transport, insurances etc.

There are numerous scholarship providers in Germany that are also available for foreign students. The scholarship database of the German Academic Exchange Service (DAAD) www.funding-guide.de helps you to find scholarship programs easily. You can filter by different types of scholarships and the database lists scholarships provided by the DAAD and other organizations and foundations. Please note that the funding conditions vary and not all scholarships are accessible for all students and all fields of study. It is recommended to contact the scholarship provider and obtain detailed information on the conditions and prerequisites before you apply for a program.

The initiative *Bayerische Betreuungsinitiative Deutsche Auslands- und PartnerSchulen (BayBIDS)* provides scholarships for excellent graduates of German schools abroad and partner schools who would like to study in Bavaria. The aim of the initiative is to facilitate entry into their course of study and support them in their decision and the connected organizational and financial effort. The scholarship amounts to €300 per month and is awarded for twelve months. It cannot be extended. The KU offers a top-up of an additional €450 per month.

More information is available at:

www.baybids.de/Motivationsstipendien.html

In the context of its funding program for the promotion of internationalization, the KU itself also offers partial scholarships for international students. This KU scholarship currently amounts to €336 per month and is awarded for a five-month period. Students can only apply for the scholarship from their second year of studies onwards. There is no automatic extension; however, candidates can apply for the scholarship again after expiry of their funding period. More information is available at:

<https://www.ku.de/en/international/international-students/services-of-the-international-office/financial-issues-scholarships>

Another funding possibility is the *Deutschlandstipendium* in the context of which selected students receive monthly support in the amount of €300 irrespective of income and nationality. The KU applies holistic performance criteria when awarding scholarships – in addition to excellent academic results, other decisive criteria are civic engagement and whether candidates have successfully overcome difficulties in their life or academic career. Scholarship holders receive the funding for at least two semesters but not exceeding the standard length of their program of study. For more information, visit:

www.ku.de/deutschlandstipendium

10. Are international students allowed to work during their studies?

In Germany, it is very common to have a student job as student assistant at the university, or at a company, supermarket or in restaurants. A student job can help you in supplementing your budget, however, it is hardly possible to cover your entire living costs with a student part-time job. Thus, it is recommended to have other financial resources to cover your costs of living – be it own funds or a scholarship. The statutory framework conditions for a part-time job depend on your nationality:

Students from the European Union, Iceland, Liechtenstein, Norway and Switzerland: Citizens of these countries have unlimited access to the German labor market. They only have to pay higher insurance contributions when they work more than 20 hours a week.

Students from all other countries: Citizens from all other countries may only work in Germany for 120 full days or 240 half days a year. However, they are not allowed to carry out freelance work or have their own business. A job as student assistant is an exception to this regulation. This kind of employment can be carried out without time limit. If the above-mentioned maximum number of working days is exceeded, the immigration office needs to be notified of the violation.

Generally, experience has shown that in most cases, a student job that fills out or exceeds the 120 full days or 240 half days per year is not compatible with a full-time course of study.



11. Which documents are required for entering Germany?

Whether international students require a visa for studying in Germany is dependent on their nationality. Citizens from an EU member state or from Iceland, Liechtenstein, Norway or Switzerland do not require a visa to enter the country; a valid ID card is sufficient. This also applies if the person in question has another nationality in addition to the above.

Apply for your visa in good time

Nationals of all countries other than those mentioned above and who only have a single citizenship will in most cases require a visa to study in Germany. They must apply for their visa in their home country before traveling to Germany. Please contact the German embassy in your country in good time to ensure that you are informed of all necessary details and current regulations. As a rule, visas for stays abroad of more than 90 days have to be applied for at least three months in advance. Please note that in most cases you have to make an appointment at your German embassy beforehand so that you can apply for a visa.

Taking into account the long processing time, it is recommended that prospective students submit their applications to the KU well before the submission deadline mentioned in question 7. The applications are processed consecutively and the corresponding notifications are also sent out consecutively (this does not apply to degree programs with admission restrictions). This allows you to plan your stay at the KU carefully and ensures that all visa matters are settled in good time before the start of the semester or language course in Eichstätt or Ingolstadt.

As soon as you have received a letter of acceptance from a university, you can apply for a student visa. If you have not yet received your letter of admission or if you need to complete an entrance examination in Germany, you can apply for a visa for study applicants. This visa will initially only be valid for three months. Please ensure that you are admitted for studies, to a *Studienkolleg* or a preparatory German course within this three-month period so that your visa can be extended.

Requirements for a visa application

As a rule, you will require the following documents to apply for a visa:

- Valid **passport**
- Proof of **health insurance**
- Proof of sufficient financial resources: The safest option is a **blocked account** with €853 credit per month. This means that for one year, you will need to prove a credit of €10,225 in the blocked account.
- Proof of prior **academic achievements** and **language proficiency**
- If applicable: **letter of acceptance** from the university
- Where necessary: **health certificate**



12. What kind of support do internationals receive at the KU?


At the KU, international students receive support for all organizational questions. The International Office (IO) and Student Advisory Service at the KU provide prospective students with information on individual degree programs, language tests, internships, financing and specific planning of their course of study before they travel to Germany. Furthermore, the IO helps international students find accommodation, with formalities and official bureaucratic procedures and in case of everyday problems and questions concerning their studies etc.

In addition, the KU has special offers for international students, such as intercultural or writing workshops. A buddy program ensures that all international students have a peer student that they can turn to at any time – not only with everyday problems but also when it comes to being integrated into a new social network.

Being a small university, the KU has an excellent lecturer-to-student ratio. This means that lecturers actually take time for all students and are able to provide individual support during courses and lectures. These excellent study conditions also ensure that fellow students get to know each other quickly and easily and can participate in several different student organizations.

Despite the comprehensive support offered by the KU, please bear in mind that the KU – just as any other higher education institution in Germany – expects a certain degree of independence of its students. The KU wants its students to take over responsibility for their program structure and course of studies as well as the learning process. This means that students have to get active themselves in order to be informed about and make use of the support offered by the KU.





*At the KU, you are
accepted with open
arms from day one.*

Cristina Cruz,
Bachelor Business and
Economics, Mexico

13. Where do international students live?

Most students in Germany either live in student residences or shared flats (these “WGs” are alternatives that are especially popular among students and young professionals). While students who live in student residences usually have their own room with their own bathroom and only share the kitchen, most WGs have both a shared kitchen and bathroom. Single apartments with an own kitchen and bathroom are more expensive than student residences or shared flats. The first two options have the additional advantage that you can meet new people really quickly and are also perfect for learning German or improving your language skills further.

Unlike in other countries, students at German universities – including at the KU – are not automatically assigned accommodation. However, the KU International Offices at both locations in Eichstätt and Ingolstadt have been in close collaboration with several student residences and other landlords for many years and are thus able to provide international students with comprehensive support when it comes to finding accommodation. Furthermore, there is also a close network among KU students which makes it relatively easy to find vacancies in existing shared flats (WGs).

The Freiwasser student residence in Eichstätt



14. What are the costs of living in Eichstätt and Ingolstadt?

The costs for accommodation in Ingolstadt are slightly higher than in Eichstätt. At both locations, prices strongly depend on where and how you want to live. In many student residences, costs for accommodation are rather low (ranging between €250 and €350 per month). In most cases, a room in a private shared flat is slightly more expensive, depending on the furnishing. Apartments offered on the private market or by private residence providers are even more expensive.

No tuition fees at the KU

When calculating the total costs for your studies, please bear in mind that you will not have to pay tuition fees at the KU! In addition, students have the possibility to eat lunch at the KU canteen and cafeteria at reduced prices from Monday to Friday. Many restaurants also offer special prices or menus for students. You can choose from a wide range of supermarkets, which makes it easy to buy food depending on your wishes and budget. Compared to the rest of Europe, costs for food in Germany are very low.

Open a current account with a bank

For students, many banks in Germany offer a standard account (current account) free of charge. You can go to any bank you like to make an appointment for opening an account. With many banks, you can also open a current account online. More information on the average costs of living is available here:

www.study-in-germany.de/en/plan-your-stay/money-and-costs/cost-of-living_28220.php



Monthly costs for students

■ Semester fee for the Studentenwerk	€56.00
■ Health insurance for students (up to the age of 30)	€110
■ Rent for accommodation/ shared flat	€250 to 350
■ Food, canteen	€150 to 200
■ Working materials	approx. €20
■ Internet (free of charge on KU campus), phone	€30
■ Leisure activities, culture, excursions	approx. €60

15. How do you get around and is there a public transport network?

In Germany, it is absolutely safe to get around by foot, bicycle or public transport. However, it is essential that you know and respect the traffic rules. Germans love to walk. Therefore, pedestrians and cyclists alike are equal road users that are respected by other (motorized) traffic participants.

Eichstätt is a small town, which means that practically everything is within walking distance. In Ingolstadt as well, many students live near campus so that they can walk or cycle to uni in the morning. In both locations, it is easy to buy second-hand bicycles at a good price.

The local and regional transport network is dense and there are special low-cost student fares for buses and

trains. Eichstätt and Ingolstadt are connected by regular bus and train services. Furthermore, small groups of students who want to attend a course or lecture at the respectively other campus can hire a KU minibus to get from one location to the other.

If you want to explore Europe, all big cities in Germany and beyond can be reached easily by train with the Deutsche Bahn or with intercity buses. There are many great offers for students traveling alone or in groups, and many students use their weekends to visit fellow students in other cities or discover new regions or countries. Students also like to make use of carpooling websites on the internet. Taxis in Germany are expensive. The nearest airports are located in Munich and Nuremberg.



16. How safe is life in Eichstätt and Ingolstadt?

In an international comparison, Germany is a very safe country to live in. You do not have to worry about crime. You can move about freely in Germany without having to take special safety measures. This applies in cities and in the countryside and both during the day and at night.

“Living in Bavaria means living more safely!”

This is especially true for both locations of the KU. Overall, crime is decreasing continuously both in Eichstätt and Ingolstadt. According to official statistics, Eichstätt is the safest district in Upper Bavaria and Ingolstadt is among the safest big cities in Bavaria. In a national comparison, Bavaria is the federal state with the lowest crime rate. Or, as local police like to put it: “Living in Bavaria means living more safely!”


However, when visiting large crowded events, such as the Munich Oktoberfest or the Nuremberg Christmas market, you should keep a close eye on your personal belongings.

German police are trustworthy and provide reliable assistance. The free emergency number, which can be used to reach the police from any telephone in Germany, is 110. Almost every country in the world has embassies or consulates in Germany. If international students encounter problems of any kind, they can also always turn to the KU International Office for help.

Top picture: Police in Germany provide assistance in case of emergencies.

Bottom picture: At large events such as the Oktoberfest, beware of pickpockets and watch your personal belongings.



A man with a full brown beard and a white baseball cap with a logo is sitting on concrete steps. He is wearing a dark grey quilted jacket over a white t-shirt, light grey jeans, and brown sneakers. His hands are clasped in his lap. The background shows a building with large windows.

What I appreciate most is how accessible and friendly people are when it comes to showing me things or explaining to me what it's like to be a student in Germany.

Jorge Cano,
Bachelor Business and
Economics, Mexico

17. How does the medical care system in Germany work?

Germany has a very well-functioning health care system with a high density of doctors and hospitals.

All students in Germany have to have health insurance. It is therefore recommended that you take care of your insurance cover before traveling to Germany. Statutory health insurance providers also have offers for international students at favorable prices. The rate is the same for all statutory insurance schemes and currently amounts to €110 per month. You have to provide proof of health insurance when applying for the residence permit and upon enrollment at the KU.

Health insurance for €110 per month

The International Office at the KU also provides advice on health insurance questions for prospective international students. The IO maintains direct contact with different insurance providers and can help you find a suitable scheme quickly and easily.

If international students have a valid health insurance contract they can go to the doctor's in Germany. In case of medical emergencies, please go to the emergency department at the hospitals in Eichstätt or Ingolstadt. For urgent emergencies only, there is a free emergency telephone number (112) which is available 24/7.

Medications in Germany are only available from pharmacies. For some medications, you will need a doctor's prescription.



Health insurance in Germany also covers treatment at the dentist's.

18. What do Germany and Bavaria have to offer as a travel destination?

Bavaria is the most popular holiday destination in Germany. Many Germans also spend their holidays in Bavaria or visit the Oktoberfest in Munich, which is known worldwide, or the fairytale castle **Neuschwanstein ①**, the enchanting Christmas market in Nuremberg or the picturesque Altmühl valley near Eichstätt. Cities such as Augsburg, Bamberg, **Munich ②**, Regensburg or Würzburg are very popular destinations. If you are a nature lover, you will be fascinated with the national parks Bavarian Forest and Berchtesgaden, the Allgäu region, the lake Starnberg and Franconian Switzerland with the beautiful scenery.

Furthermore, Bavaria is home to as much as eight UNESCO World Heritage Sites: the water management of the city of Augsburg, the **Würzburg Residence ③** with its garden front *Hofgarten*, the Pilgrimage Church of Wies in Steingaden, the old towns of Bamberg and Regensburg, the Limes (the border wall at the frontier of the Roman Empire), prehistoric pile dwellings near the Alps and the Bayreuth Opera House.





The famous Bavarian cuisine offers great culinary pleasures, along with the popular **Bavarian beer** 4 and Franconian wine.

The bishop's seat Eichstätt (in the picture you can see the stairwell of the **prince bishop's residence** 5) is situated right in the heart of the Altmühl valley, which offers plenty of opportunities for hiking and **bicycle tours** 6. Car enthusiasts should not miss the "BMW Welt" in Munich or the Ingolstadt **Audi museum** 7. In summary, Bavaria offers plenty to see and do for everyone who likes active holidays or cultural trips and for young and old alike.

In foreign countries, many Bavarian particularities and traditions are even seen as an epitome for Germany, such as the **Lederhosen** 8 and **Dirndl** 9. And Bavaria invites you to experience the authentic original. Bavaria and its inhabitants are uniquely characterized by the fascinating combination of tradition and modernity, placid love of their country and cosmopolitan open-mindedness and nature and urban life.



The location of the KU is great. Many countries are in close proximity, making it easy to explore other places during your study stay.

Andrea Delgado, Master Business and Economics, Colombia





19. What opportunities do internationals have after their studies?

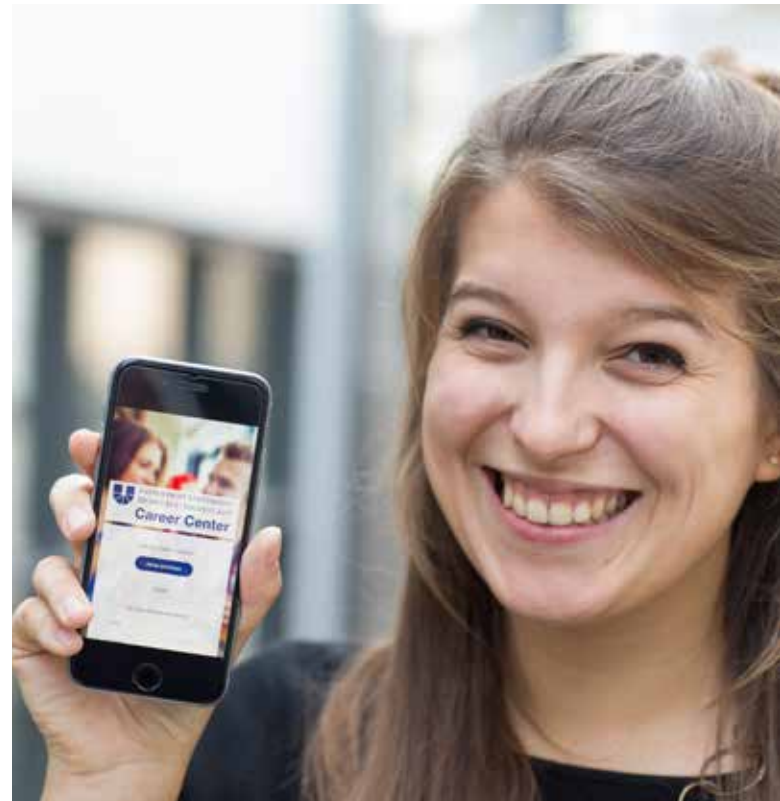
The KU also cares about what students do after their studies. It maintains close ties with numerous firms, offers practical projects in collaboration with partner companies, has its own Career Service, an own KU jobs portal and offers recruiting events on campus. Like this, KU students get the chance to build a comprehensive network at an early stage which will facilitate transition into their professional lives after their studies.

Internationals who do not require a visa in Germany have the same rights and opportunities as Germans when applying for jobs after their studies. Furthermore, highly qualified graduates in Germany and Bavaria in general and specifically in the booming region of Eichstätt and Ingolstadt have excellent career prospects. However, you have to take into account the respectively applicable provisions on the residence and work permits for foreign graduates. If you have to obtain a visa in order to study in Germany, you will be allowed to stay in the country for up to 18 months after successful completion of your studies in order to search for a job.

Booming economy – booming region

The region in which the KU is located offers excellent conditions in this respect. The cities of Ingolstadt and Eichstätt are doing very well economically. Ingolstadt is the big city with the lowest unemployment rate and the highest average income in Germany. Eichstätt's economy is at full employment.

Besides the car manufacturer Audi AG in Ingolstadt, there are also a couple of strong medium-sized enterprises in the region and a broad spectrum of successful companies in the service, trade, craft and tourism sectors. However, despite having earned a German university degree and also in cases of internationally operating companies, very good knowledge of German is indispensable if you want to be successful in finding a job in Germany.



"Career Center", the jobs portal of the KU



David Guevara, contact person for international degree-seeking students at the International Office

20. Where can I get more information?

General information for international degree-seeking students (including information on scholarships):

KU International Office

welcome@ku.de

+49 (0)8421 93-23456 (Secretary's office)

<https://www.ku.de/en/international/international-students/degree-seeking>

For questions concerning the choice of subjects and studies in general:

KU Student Advisory Service

studierendenberatung@ku.de

+49 8421 93-21364 (Secretary's office)

<https://www.ku.de/en/study-at-the-ku/information-for-foreign-nationals/advice/student-advisory-service>

Contact persons for questions concerning a specific degree program and the program structure or regarding contents and future career prospects:

<https://www.ku.de/fileadmin/22/Fachstudienberatung/Fachstudienberatung.pdf>

Contact persons for enrollments, applications and all organizational tasks in connection with taking up your studies at the KU and during your course of study:

KU Student Office

international-admissions@ku.de

+49 8421 93-23189 or -21216

<https://www.ku.de/en/studium/informationen-fuer-studierende/studierendenbuero/bewerbung/information-for-foreign-nationals>

Information for international students on the application process at the KU:

German:

<https://www.ku.de/international/internationale-studierende/degree-seeking/bewerbung-vorraussetzungen>

English:

<https://www.ku.de/en/international/international-students/degree-seeking/application-requirements>

Further information and useful links

Information portal on foreign education qualifications:

<https://anabin.kmk.org/anabin.html>

Studienkolleg (preparatory college) for Bavarian universities:

<http://studienkolleg-muenchen.de>

Bavarian office for the recognition of foreign certificates:

http://www.las-bayern.de/content/abt3/r1/allgemeinbildende_schulabschluesse.html

Information on your first steps in Germany:

<https://www.daad.de/en/study-and-research-in-germany/first-steps-germany/>

General information on studying in Germany:

www.study-in.de/en

www.youtube.com/channel/UCJ_7CUHExDm1KDsxHE4G3w

www.studieren-in-deutschland.org

<https://www.daad.de/en/study-and-research-in-germany/>

www.hochschulkompass.de/en/degree-programmes.html

Information on further scholarship opportunities:

<https://www.daad.de/en/study-and-research-in-germany/scholarships/>

Information and impressions on Bavaria:

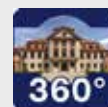
<https://www.welcomedahoam.com/en>

<https://www.study-in-bavaria.de>

Information on the KU:



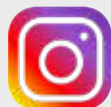
KU website:
www.ku.de/en



Virtual KU
campus tour
ku.de/campustour



facebook.com/uni.eichstaett



instagram.com/uni.eichstaett & ku.international



youtube.com/unieichstaett



Publisher's information

Published by: the President of the Catholic University of Eichstätt-Ingolstadt

Designed and edited by: KU International Office, Dr. Anna Marcos Nickol, Dr. Andreas Riffel

Department of Communication and Marketing, Dr. Christian Klenk, Brigitte Hardt, Sylvia Schmagrer

Photos: Catholic University of Eichstätt-Ingolstadt, Colourbox.de

Last updated: August 2020

